

>> GRAVITY DIVERT VALVE GPD

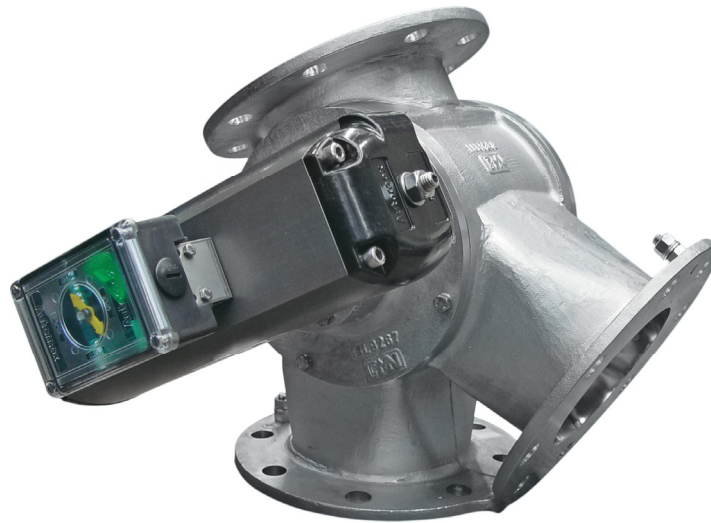
>> FEATURES:

- Rugged vane construction
- Available in stainless steel AISI 316, cast iron and aluminum
- Sealed and permanently lubricated outboard bearings
- Easily demountable design
- Change on the fly with most powders
- One-piece body with removable end plates and rotating blade assembly
- Pneumatic or manual operation
- Flanges drilled according to PN 10 or ANSI 150 lbs.
- Versions conforming to ATEX 94/9/EC available

GPD Valves

The new Gravity Divert Valve (Gravity Plug Diverter) is a two-way, demountable gravity diverter valve and is ideal for system installations that require frequent cleaning with minimum downtime. Design allows for fast disassembly in installed location and

easy access to all product-contact surfaces. Material flow through the valve is unrestricted with no ledges or dead spots. The valves are manufactured in a range of finish options, including sanitary specification.



Product Information

The GPD diverter is available with a cast iron, aluminum or stainless steel AISI 316 housing, in which a stainless steel AISI 316 plug is installed. The diverters are manufactured from a rugged cast design, which guarantees stability and a problem-free operation.

however has a rotor manufactured as a one-piece fabrication, therefore eliminating these risks.

The GPD can be used for product temperatures ranging from 14 °F up to 176 °F. Options for higher temperatures are available upon request.

Comparable fabricated gravity flap diverters normally have a polyurethane flap clamped between two metal plates to protect the seal. The disadvantage of this construction is that seal material can break off and cause leakage, as well as contaminating the product. There is also a risk that nuts and bolts could become undone and also contaminate the product as well as damaging equipment down stream. The GPD

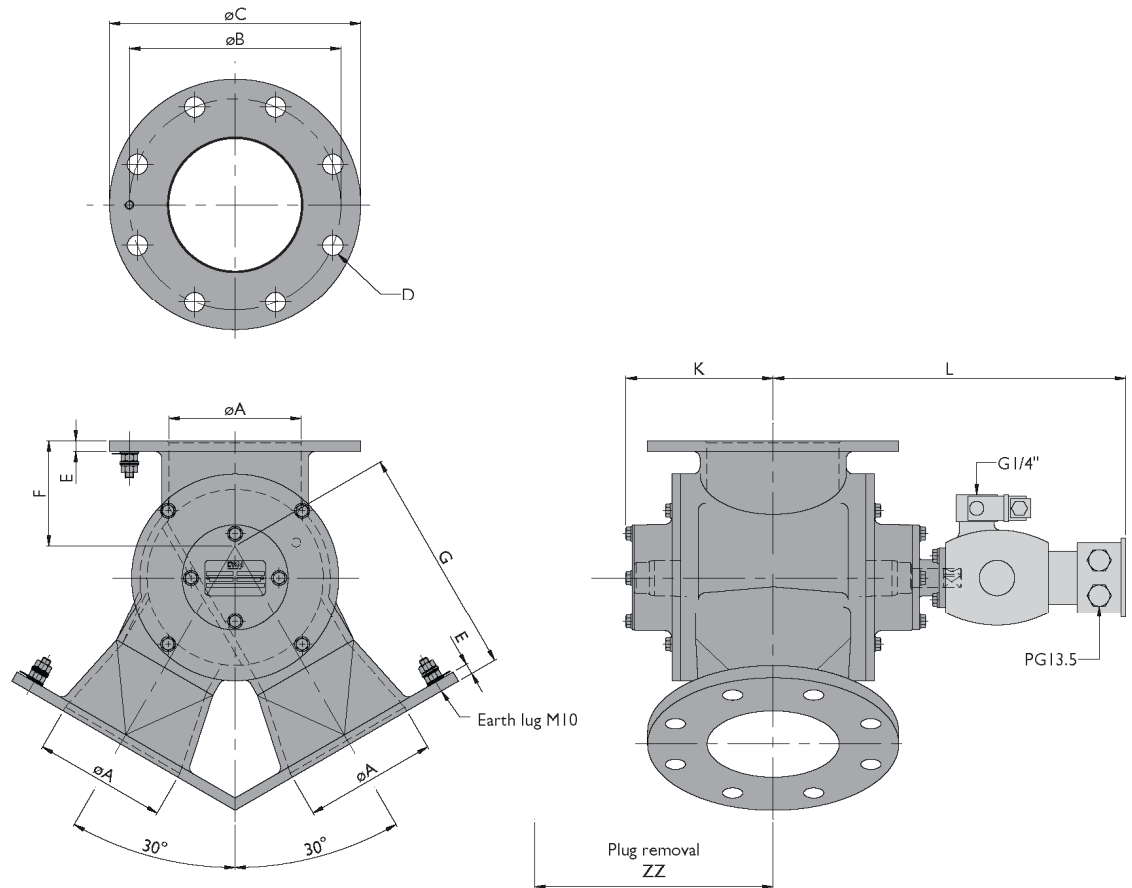


Powder Process-Solutions
Div. of Powder-Solutions Group
1620 Lake Drive West
Chanhassen, MN 55317
Ph: 952-279-5205
Fax: 952-279-5206
sales@powder-solutions.com
www.powder-solutions.com

>> GRAVITY DIVERT VALVE (GPD)

>> FEATURES:

- Rugged vane construction
- Available in stainless steel AISI 316, cast iron and aluminum
- Sealed and permanently lubricated outboard bearings
- Easily demountable design
- Change on the fly with most powders
- One-piece body with removable end plates and rotating blade assembly
- Pneumatic or manual operation
- Flanges drilled according to PN 10 or ANSI 150 lbs.
- Versions conforming to ATEX 94/9/EC available



TYPE GPD	DIN				ANSI							
	ØA	ØB	D	ØC	ØB	D	E	F	G	K	L	ZZ
150	5.91	9.45	8xØ0.91	11.22	9.50	8xØ0.87	0.47	4.69	10.24	6.69	15.75	19.09
200	7.87	11.61	8xØ0.91	13.50	11.75	8xØ0.87	0.59	5.47	12.20	7.68	16.73	22.05
250	9.84	13.78	12xØ0.91	15.98	14.25	12xØ1.00	0.59	6.10	14.76	8.66	18.90	25.39
300	11.81	15.75	12xØ0.91	19.02	17.00	12xØ1.00	0.59	6.50	17.72	9.65	19.88	28.35



Powder Process-Solutions
 Div. of Powder-Solutions Group
 1620 Lake Drive West
 Chanhausen, MN 55317
 Ph: 952-279-5205
 Fax: 952-279-5206
sales@powder-solutions.com
www.powder-solutions.com