

>> GRANULAR VALVE GL

>> FEATURES:

- Maximum protection against product degradation
- High filling efficiency
- Large air vent openings
- Robust construction
- Available with direct drive or chain driven
- Flanges drilled in accordance with PN 10, ANSIS 150 lbs. and JIS
- Versions conforming to ATEX 94/9/EC available

Granular Valves

GL valves are specially designed for gravity feeding and pneumatically conveying granular products. The configuration of the body and rotor has been developed specifically to minimize degradation whilst retaining

the best possible pocket filling efficiency.

GL Valves come in 5 sizes, covering a capacity range from approximately .18 to 2.8 CFR at 100% filling.



Product Information

Three different body configurations are available: all stainless steel, stainless steel body with aluminum end covers, and an all aluminum design. The aluminum configurations are anodized.

The full end disc rotor is made of 316 stainless steel. The end covers have outriggered ball bearings and the shaft is sealed with gland packings. The construction of the inlet minimizes chopping of the product.

Standard models are suitable for handling products up to a temperature of 302 °F and a maximum pressure differential of 21.75 PSI. Other options are available on request.

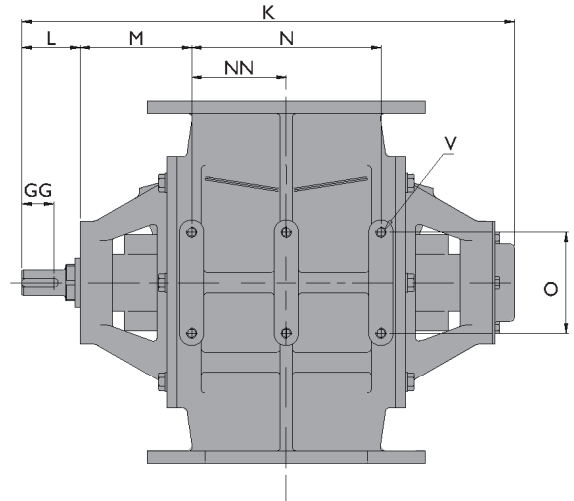
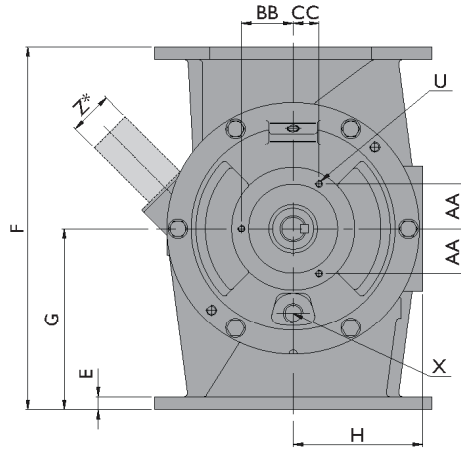
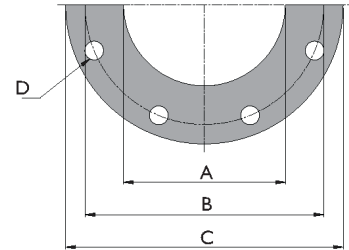
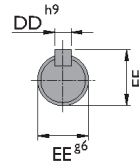
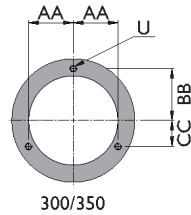


Powder Process-Solutions
Div. of Powder-Solutions Group
1620 Lake Drive West
Chanhausen, MN 55317
Ph: 952-279-5205
Fax: 952-279-5206
sales@powder-solutions.com
www.powder-solutions.com

>> GRANULAR (GL) VALVE

>> FEATURES:

- Maximum protection against product degradation
- High filling efficiency
- Large air vent openings
- Robust construction
- Available with direct drive or chain driven
- Flanges drilled in accordance with PN 10, ANSIS 150 lbs. and JIS
- Versions conforming to ATEX 94/9/EC available



Type GL	ft ³ /rev	DIN			ANSI			E	F	G	H	K	L	M	N	NN	O
		ØA	ØB	D	ØC	ØB	D										
150	0.18	5.91	9.45	8xØ0.91	11.22	9.50	8xØ0.87	0.47	14.17	7.09	5.12	20.63	2.36	4.92	7.48	-	3.94
200	0.35	7.87	11.61	8xØ0.91	13.50	11.75	8xØ0.87	0.63	17.72	8.86	6.30	23.98	2.83	5.43	9.21	-	4.92
250	0.62	9.84	13.78	12xØ0.91	15.98	14.25	12xØ1.00	0.71	19.69	9.84	7.48	25.94	2.83	5.43	11.18	5.59	4.92
300	1.13	11.81	15.75	12xØ0.91	19.02	17.00	12xØ1.00	0.91	23.62	11.81	8.86	30.04	2.91	5.91	14.17	7.09	4.92
350	2.79	13.78	18.11	16xØ0.91	20.87	18.75	12xØ1.12	1.10	29.53	14.76	11.61	34.76	2.91	6.10	18.50	9.25	4.92

Type GL	U	V	X	Z	AA	BB	CC	DD	EE	FF	GG
150	3xM6	4xM10	3/8" BSP	Ø1.90x0.08	1.46	2.07	1.46	0.31	1.18	1.30	1.38
200	3xM8	4xM12	1/2" BSP	Ø2.37x0.08	2.18	2.52	1.26	0.39	1.26	1.38	1.69
250	3xM8	6xM12	1/2" BSP	Ø3.00x0.08	2.18	2.52	1.26	0.39	1.26	1.38	1.69
300	3xM10	6xM12	3/4" BSP	Ø3.50x0.08	2.90	3.35	1.67	0.39	1.50	1.61	1.73
350	3xM10	6xM12	3/4" BSP	Ø3.50x0.08	2.90	3.35	1.67	0.39	1.50	1.61	1.73

* Option : Vent pipe



Powder Process-Solutions
 Div. of Powder-Solutions Group
 1620 Lake Drive West
 Chanhassen, MN 55317
 Ph: 952-279-5205
 Fax: 952-279-5206
sales@powder-solutions.com
www.powder-solutions.com