

# >> DUST LOCK (DL) VALVE

## >> FEATURES:

- Minimum air leakage
- Polyurethane rotor blades
- Suitable for both round and square counter flanges
- Ex stock delivery
- Versions conforming to ATEX 94/9/EC available
- Versions conforming to ATEX 94/9/EC available, specifications up to Group II Category I D

## DL Valves

The DL (Dust Lock) valve is of a dedicated design for filter applications.

The inlet of the valve is square, therefore accommodating both round and square outlets from the vessel that has to be discharged. The angle of the

inlet down to the rotor has been kept as steep as possible to reduce the chance of bridging. The outlet from the valve is round so that you can discharge into either a round or square connection.



*Dust Lock*

## Product Information

The DL valve has a very large inlet and a direct drive, providing ample torque to drive the rotor, which has 6 replaceable and adjustable polyurethane blades. An optional steel fixed bladed rotor is also available on the 250 size.

The standard drive is a Nord helical geared motor, type SK01-F-71L/4, 0.37 kW, IP 55, isol. F, giving 27 rpm

at 50 Hz and 32.4 rpm at 60 Hz. Suitable for 230/400V 50 Hz and 278/480V 60 Hz.

The standard model is suitable for handling products up to a temperature of 158°F and a maximum pressure differential of 7.25 PSI. The valve is pressure shock resistant up to 145 PSI.

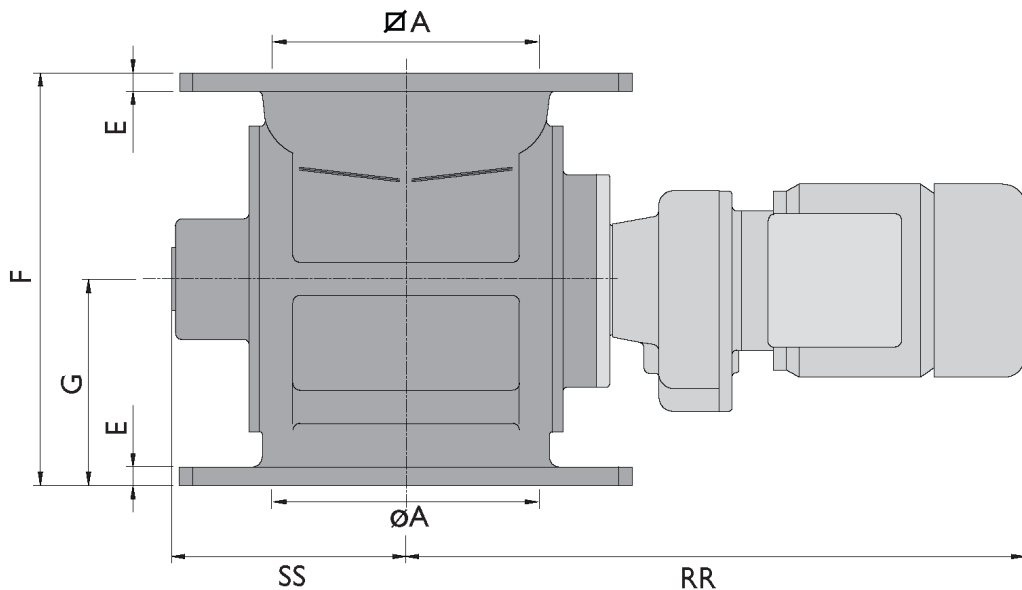


Powder Process-Solutions  
Div. of Powder-Solutions Group  
1620 Lake Drive West  
Chanhausen, MN 55317  
Ph: 952-279-5205  
Fax: 952-279-5206  
[sales@powder-solutions.com](mailto:sales@powder-solutions.com)  
[www.powder-solutions.com](http://www.powder-solutions.com)

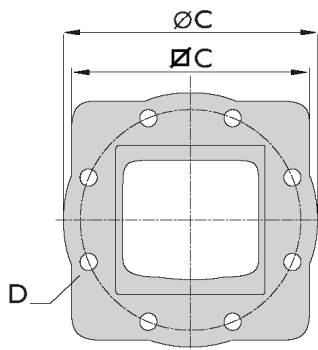
# >> DUST LOCK (DL) VALVE

## >> FEATURES:

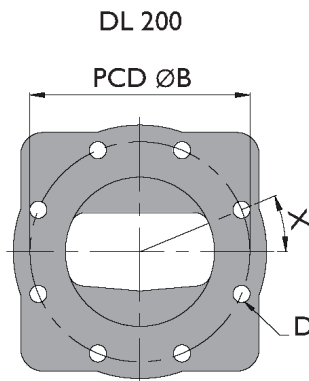
- Minimum air leakage
- Polyurethane rotor blades
- Suitable for both round and square counter flanges
- Ex stock delivery
- Versions conforming to ATEX 94/9/EC available
- Versions conforming to ATEX 94/9/EC available, specifications up to Group II Category I D



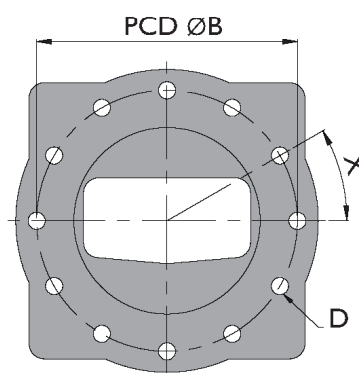
**Inlet**



**Outlet**



**DL 250**



Type DL	ft3/rev	ØA	ØA	ØB	ØC	ØC	D	E	F	G	X	RR	SS
200	0.21	7.87	7.87	11.61	13.39	12.60	8xØ0.91	0.55	12.20	6.10	22.5°	18.31	6.93
250	0.30	9.84	9.84	13.78	15.98	14.57	12xØ0.91	0.59	12.80	6.40	30°	19.09	7.72



Powder Process-Solutions  
 Div. of Powder-Solutions Group  
 1620 Lake Drive West  
 Chanhassen, MN 55317  
 Ph: 952-279-5205  
 Fax: 952-279-5206  
[sales@powder-solutions.com](mailto:sales@powder-solutions.com)  
[www.powder-solutions.com](http://www.powder-solutions.com)