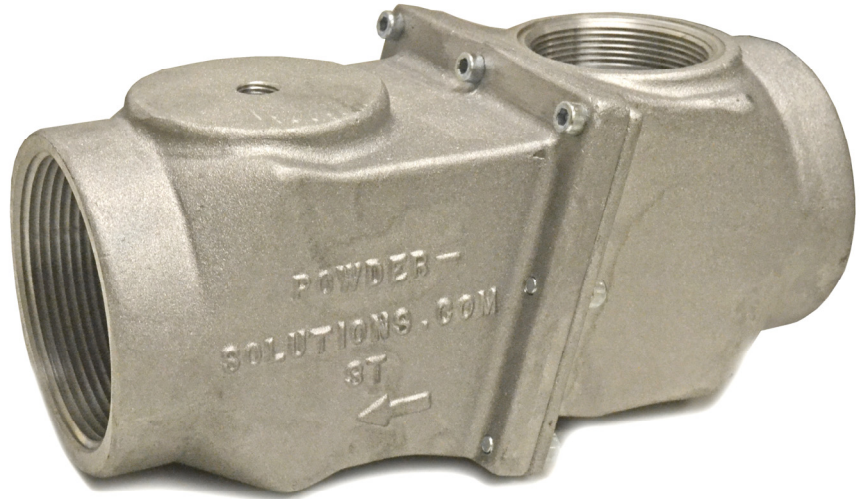


# >> CHECK VALVE



## PSI Check Valve

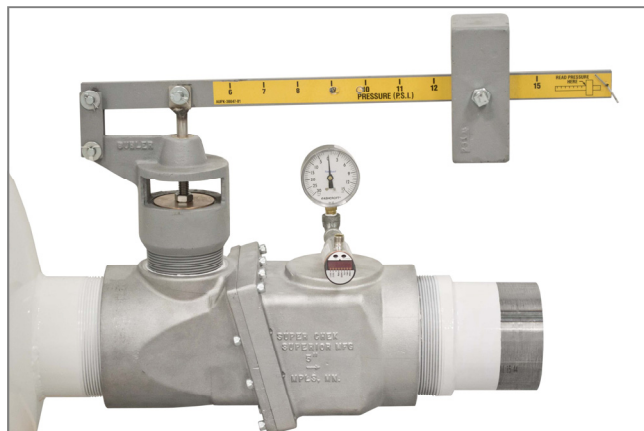
The Check Valve provides positive displacement blower protection. The design features gravity drop of the check plate in case of reverse air pressure or in the absence of air flow.

The Check Valve is applicable for material handling equipment using air blowers, truck trailers using air conveying material handling systems, and all types of industries utilizing pneumatic air conveying equipment. When installed on bulk truck applications, wear and damage to the check plate caused by bounce are eliminated by the use of holding magnets.

## Construction

The standard construction is cast aluminum with a stainless steel check plate. Boss are cast into the unit so that a pressure gauge and/or relief valve can be mounted directly to the check valve.

End connections are standard pipe threads. The elimination of plumbing connections normally required will pay for the valve itself!

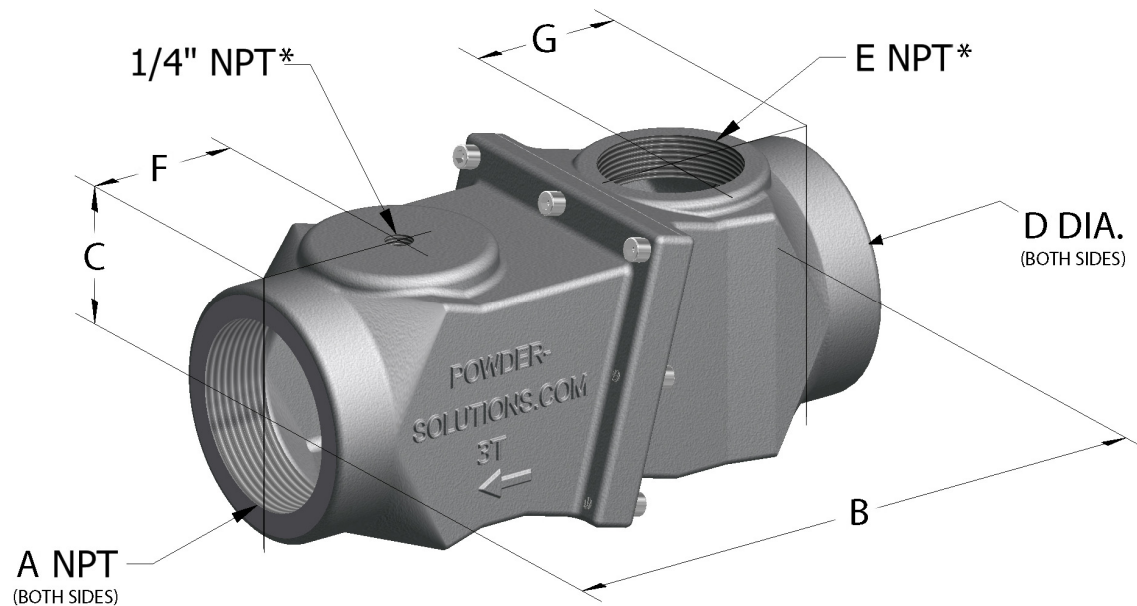


*Installed check valve and gauge.*



Powder-Solutions Inc.  
Div. of Powder-Solutions Group  
1620 Lake Drive West  
Chanhasen, MN 55317  
Ph: 877-236-3539  
Fax: 952-279-5206  
sales@powder-solutions.com  
[www.powder-solutions.com](http://www.powder-solutions.com)

# >> CHECK VALVE



VALVE NO	A	B	C	D	E*	F	G	WEIGHT
3T	3	10	2 1/4	4	2	2 1/2	2 1/2	7
4T	4	12	2 7/8	5 1/8	3	3 3/8	3	10
5T	5	14 1/4	3 3/8	6 1/2	3	3 3/4	3 3/4	18
6T	6	16 3/4	4	7 3/4	3	6 1/2	4 1/2	27

NOTE: All dimensions are in inches, weight in pounds.

\*-Top port tap sizes listed are standard. Reducing bushings and valves without accessory points are available upon request.



Powder-Solutions Inc.  
 Div. of Powder-Solutions Group  
 1620 Lake Drive West  
 Chanhassen, MN 55317  
 Ph: 877-236-3539  
 Fax: 952-279-5206  
[sales@powder-solutions.com](mailto:sales@powder-solutions.com)  
[www.powder-solutions.com](http://www.powder-solutions.com)